



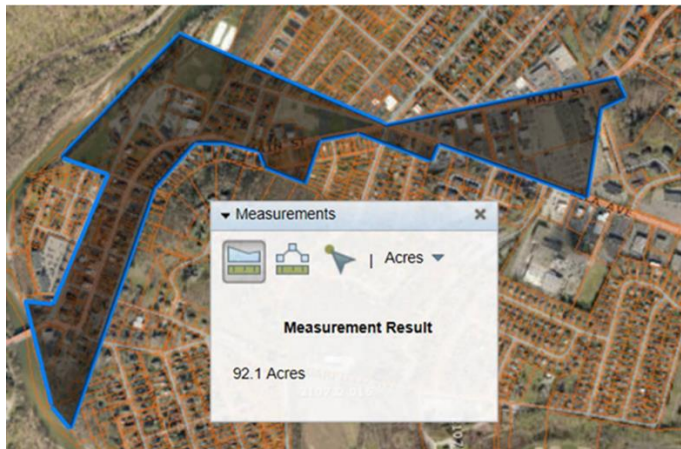
## Designated Outdoor Refreshment Area



### DORA

City Council approved creation of a Designated Outdoor Recreation Area (DORA) on July 16, 2019. The DORA allows for residents and visitors to consume alcoholic beverages from designated cups in the approved boundary area (see map below). The beverages must be purchased from an establishment which has a liquor license with a DORA endorsement (provided at no charge by the Division of Liquor Control once processed). Liquor Permit holders within the DORA are not required to participate, however are encouraged to continue to boost Milford’s position as an entertainment destination. The hours of the DORA are Monday-Thursday from 4pm-10pm AND Friday-Sunday from 11am-midnight.

DORA Boundaries:



- Copper Blue down Main Street all the way to the Bridge on Mill Street
- By Golly’s down Lila Avenue, down Short Lila to the American Legion (includes all of Riverside Park) and down Water Street to the Bridge on Mill Street

Permit Holders in the DORA:

• Copper Blue	• Lehr’s Prime Market
• By Golly’s	• American Legion Post 450
• Chez Renee French Bistrot	• Padrino
• 20 Brix	• The Main Cup
• Little Miami Brewing Company	• Chappy’s Bourbon Bar & Bites

*As new permit holders are added to the DORA boundaries, they will be allowed to participate per the Division of Liquor Control.*

## DORA Guidelines



These signs will be posted at the boundaries of the DORA and the Milford Police Department will be enforcing the boundaries and effective times.



DORA approved cups. 16 oz plastic cups that are frosted and turn red when filled with cold liquid.

